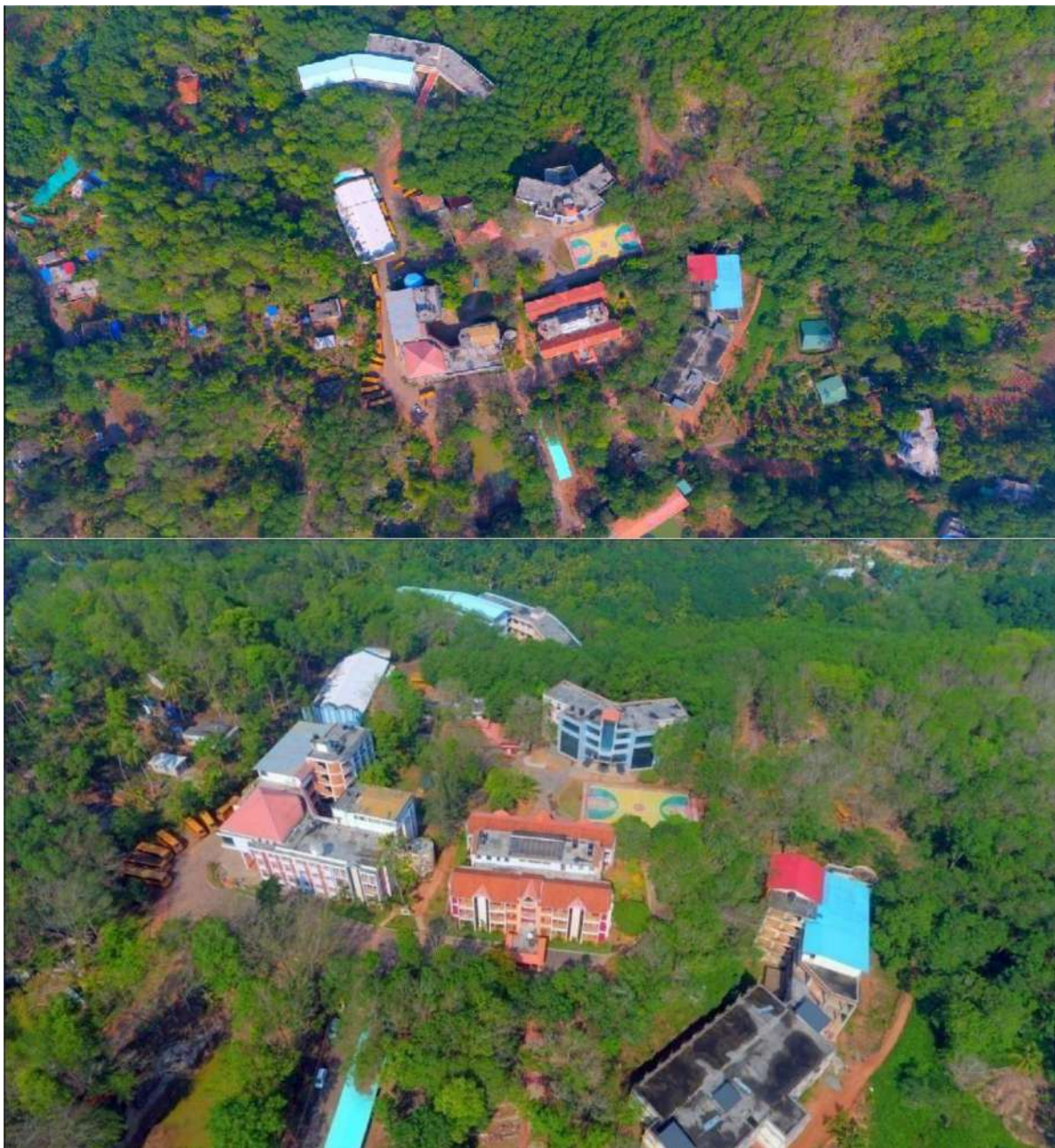


LOURDES MATHA COLLEGE OF SCIENCE AND TECHNOLOGY

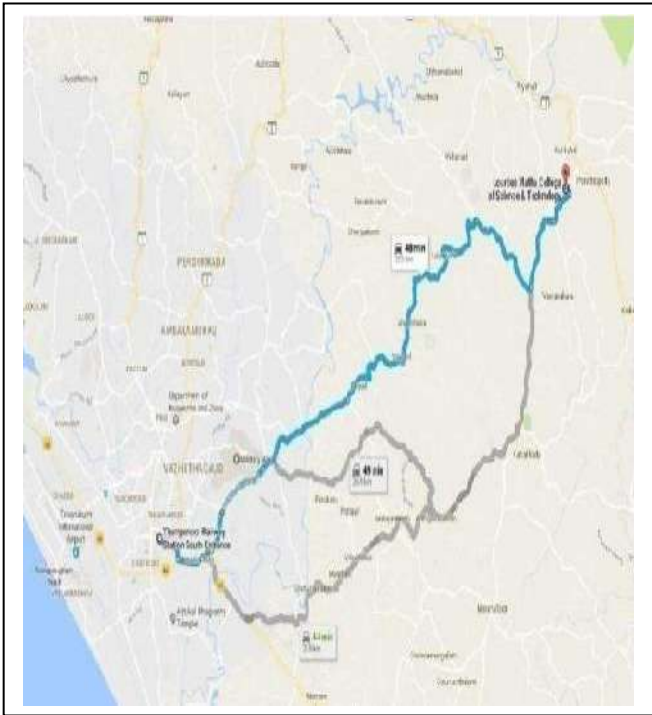


MANDATORY DISCLOSURE 2023 –2024

1. AICTE APPROVAL

1. AICTE File No:	F.No.: South-West/1-9317618057/2021/EOA
Date & Period of last approval	Date: 10/06/2023

2. INSTITUTION DETAILS

Name of Institution	LOURDES MATHA COLLEGE OF SCIENCE AND TECHNOLOGY
Address of the Institution	LOURDES HILLS. KUTTICAL P.O MANNOORKARA VILLAGE, KATTAKADA TALUK
City & Pin code	THIRUVANANTHAPURAM, 695574
State	KERALA
Longitude and Latitude	 <p>8°33'27.4"N 77°05'58.6"E</p>
Phone No: with STD code	0472– 2853550, 2853682,2853546
Office hours of the Institution	08:50AM –03:50 PM
Academic hours of the Institution	08:50AM –03:50 PM
Email	mail@lmcst.ac.in director@lmcst.ac.in principal@lmcst.ac.in lourdesmathaoffice@gmail.com
Website	www.lmcst.ac.in
Nearest Railway Station	Thiruvananthapuram Central Railway Station, Neyyatinkara Railway Station
Nearest Airport	Thiruvananthapuram International Airport
Vision of the Institution	Establish a Centre of Excellence for Professional Education with focus on societal service for nation building, research and development in cutting edge technologies for the benefit of humanity.

Mission of the Institution	Mould world class professionals by enabling knowledge acquisition for research and development, design of novel systems and scientific analysis with focus on team work culture, continual learning, creating sustainable environment and noble society using modern technologies.
Type of Institution	Technical Institution
Category of the Institution	Private, Self-Financing
Name of the organization running the Institution	Lourdes Matha Catholic and Educational Society
Type of the Organisation	Self-Financed
Address of the Organisation	Lourdes Centre, PMG Junction, Pattom, Thiruvananthapuram, Pin-695 004
Registered with	Registrar of Societies Kerala
Registration Date	17.09.2001
Website of the Organisation	www.lmcst.ac.in
Name of the Affiliating University	• A.P.J Abdul Kalam Technological University
Address	<ul style="list-style-type: none"> • APJ Abdul Kalam Technological University , CET Campus, Thiruvananthapuram • Kerala -695016 India
Website	• http://ktu.edu.in/
Latest Affiliation period	2023-24

3. NAME AND DETAILS OF PRINCIPAL & DIRECTOR

Name of Principal	Dr. Beshiba Wilson
Highest Degree	Ph.D.
Exact Designation	Principal
Field of Specialization	Computer Science & Engineering
Phone number with STD code	0472 – 2851166(O) 9447729207 (Mobile No)
Email	principal@lmcst.ac.in
Name of Director	Rev. Dr. Bejoy Arackal
Highest Degree	Ph.D.
Exact Designation	Director
Field of Specialization	Malayalam
Phone number with STD code	0472 – 2851169 (O) 9747717666 (Mob. No)
Email	director@lmcst.ac.in

4. GOVERNING BODY MEMBERS

Sl. No	Designation in the Society/Trust	Name of the Members of the Society/Trustees
1	Patron	H. G. Mar Joseph Perumthottam, Metropolitan Archbishop of Changanacherry
2	Co-Patron & President	H. E. Auxiliary Bishop Mar Thomas Tharayil
3	Vice President	Rev.Fr. Joseph Kaithaparambil
4	Secretary	Rev.Dr. Bejoy Arackal
5	Joint Secretary	Rev.Fr. Sonichen K Thomas
6	Treasurer	Rev.Fr.Paul Peediyekkal
7	Member	Rev.Fr.Aji puthen Purackal
8	Member	Rev.Fr. Isaac Alenchery
9	Member	Rev.Fr Cherian Karikompil
10	Member	Rev. Fr. Jibin Keezhaplackal
11	Member	Rev.Fr. Gregory Meppuram
12	Member	Rev. Fr. Jose Puthenchira

EXECUTIVE COMMITTEE

Sl. No.	Name	Position in EC
1	H. E. Auxiliary Bishop Mar Thomas Tharayil	President, LMCES
2	Rev. Dr. Bejoy Arackal	Director LMCST
3	Rev. Fr. Paul Peediyekkal	Treasurer LMCES
4	Dr. Beshiba Wilson	Principal ,LMCST

5. NAME OF FUNCTIONARIES

Sl. No.	Name	Position in EC
1	H. E. Auxiliary Bishop Mar Thomas Tharayil	President, LMCES
2	Rev. Dr. Bejoy Arackal	Director, LMCES
3	Dr. Beshiba Wilson	Principal, LMCST
4	Rev. Fr. Paul Peediyekkal	Treasurer LMCES

- Executive Committee Meetings—Once in every month (1st Monday)
- Date of last meeting: 08/01/2024

6. ACADEMIC ADVISORY BOARD

Slno	Name	Position in AAB
1	Mar Thomas Tharayil Co-Patron, Lourdes Martha Catholic Educational Society	Chairman
2	Mr. P C Cyriac, IAS (Rtd) Addl. Chief Secretary, Tamil Nadu Govt.	Member
3	Mr. T. K. Jose, IAS(Rtd) Addl. Chief Secretary, LSGD	Member
4	Mr. Gilroy Mathew Vice President, UST Global	Member
5	Dr. Sukesh Kumar Former Director, LBS, TVM	Member
6	Dr. Kurian Issac Senior Prof, IIST, TVM	Member
7	Dr. Shibu A Asso. Professor, CET, KTU Nominee	Member
8	Rev. Fr. Joseph Kaithaparambil Vice-president, LMCES	Member
9	Rev. Dr. Bejoy Arackal Director & Secretary, LMCES	Member
10	Rev.Fr. Paul Peediyekkal Treasurer. LMCES	Member
11	Dr. Beshiba Wilson Principal, LMCST	Member Secretary
12	Dr. Sreekumar V HOD, ME Dept & CGPC Coordinator	Member
13	Ms. Christy Jojoy Asst. Professor, CSE Dept.	Member

- Academic Advisory Body—once in every year

7 COLLEGE COUNCIL

Sl. No.	Name and Designation	Post in CC
1	Dr. . Beshiba Wilson Principal, Lourdes Martha College of Science and Technology	Chairman
2	Dr. Sunil J HOD, Civil Dept	Member
3	Mr. Carold Wilson Lazer J HOD, Applied Science Department	Member
4	Dr. Smitha J C HOD, CSE Dept	Member
5	Ms. Sreekala Devi K HOD, EEE Dept	Member
6	Dr. Sreekumar V HOD, ME Dept	Member
7	Dr. Reeba Rex S HOD, ECE Dept	Member
8	Dr. Syamnath R S HOD , MBA	Member
9	Ms. Bismi K Charleys HOD, MCA Dept	Member
10	Ms. Renu V Asst. Prof, EEE	Member
11	Ms. Renetha J B Asso. Prof, CSE	Member
12	Ms. Bincy Louis Asst. Prof, ECE	Member
13	Ms. Sheeba Kumari Asst. Prof, CE	Member
14	Mr. Anu S S Asst. Prof, Phy. Ed.	Member
15	Ms. Abhirami S P S3, MBA	Member
16	Ms. Sreedevi Vijayan S7 CE	Member

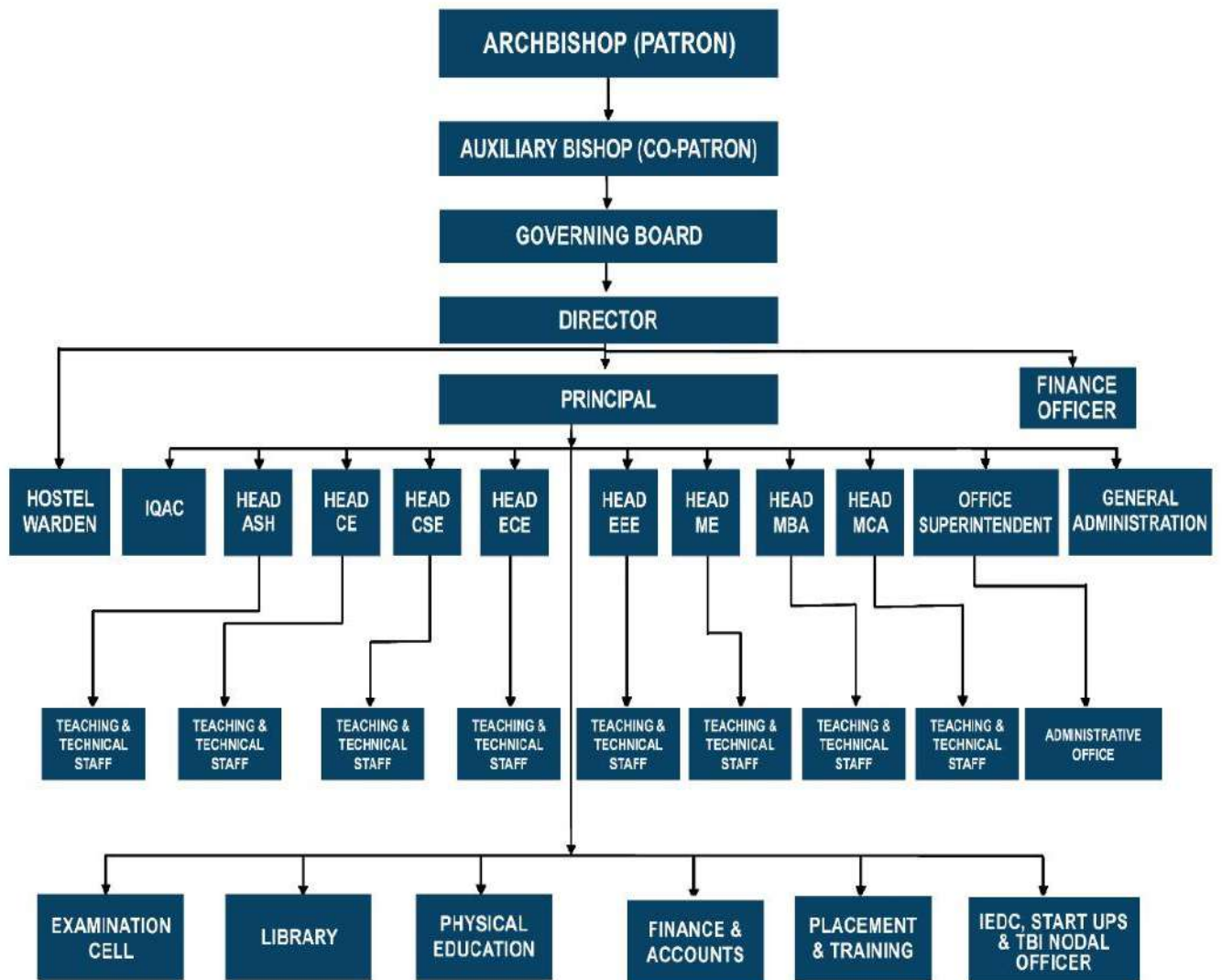
- College Council Meeting-Once in two weeks (Wednesday)
- Date of last meeting: 10/01/2024

8 ORGANISATIONALCHART



LOURDES MATHA
 COLLEGE OF SCIENCE AND TECHNOLOGY
 Bureau Veritas Certified ISO 9001 - 2015 Institution

ORGANIZATIONAL CHART



9. Student feed back mechanism on :Institutional governance /Faculty Performance	Online evaluation of teachers by students is conducted thrice in a semester – before two series tests and at the end of the semester. In addition to this, infrastructural feedback of students is obtained during every semester. Feedback of students is also obtained during staff Advisory meetings, Course Committees and Class committees to monitor the performance of faculty and students.
10.Grievance redressal mechanism for :faculty, staff and students	A Committee has been constituted to look into the grievances of staffs as well as students and to redress them accordingly. The committee will take up matters related to asperities/hardships faced by staffs and students and find an amicable solution
11.Parent Teacher Association :	PTA is the best link to teachers, and is one of the easiest waystobecomeinvolvedinstudentsactivitiesrelatingtocollege.PTAforms the best platform for the Parent–teacher interaction, building a good Support. PTA provides parents to collectively involve and influence the decisions taken by the college that will influence the academic future of their wards. P TA meetings are held after every series examination, so that the parents and teachers can have continuous monitoring of their ward.
12.PTA Executive Committee 2023 :	<ul style="list-style-type: none"> • Dr.Beshiba Wilson, Principal -President • Mr. A Jayakumaran Nair(Parent of Adhwaith Krishnan J R-S4 CSE)-Vice President • Ms. Asha A. S., Asso. Prof., CSE- Secretary • Ms. Deeja Milner(ME)-Treasurer • Dr. Sunil J. HOD, Civil Dept • Mr. Carold Wilson Lazer, HOD, ASH • Dr. Smitha J C., HOD, CSE • Ms. Sreekala Devi K, HOD, EEE • Ms. Bismi K Charleys, HOD, MCA • Dr. Reeba Rex S, HOD, ECE • Dr. Sreekumar V, HOD, ME • Dr. Syamnath R S, HOD, MBA • Parent Representatives

13. ABOUT THE INSTITUTION

As flag bearers of excellence in professional education in South Kerala,“*Lourdes Matha Catholic Educational Society*” was started by the initiative of Rev.Fr .Joseph Kurinjiparampil, with the encouragement and association of a few Syrian Catholic Parishioners in Thiruvananthapuram, who have left in delible imprints in the segment of education and with the blessings and patronage of His Grace Mar Joseph Powathil, the then Archbishop of Changanassery.



Lourdes Matha College of Science and Technology established by the “Lourdes Matha Catholic Educational Society”, has been approved by the Government of Kerala and the All India Council for Technical Education (AICTE) vide order No:06/06/KER/ENGG2002-03 dated 27-05-2002 and is affiliated to the APJ Abdul Kalam Technological University.



The College has a spacious campus of 25 acres at Kuttichal, a rustic village in the outskirts of Thiruvananthapuram city, hardly 24s km away from it. The scenic beauty and virgin surroundings of the picturesque lush green rubber plantations in the back drop of misty Western Ghats and the serene, tranquil hillock provides a perfect and appropriate study environment. The institution has a vision, mission, and quality policy for augmenting and maintaining its academic excellence.

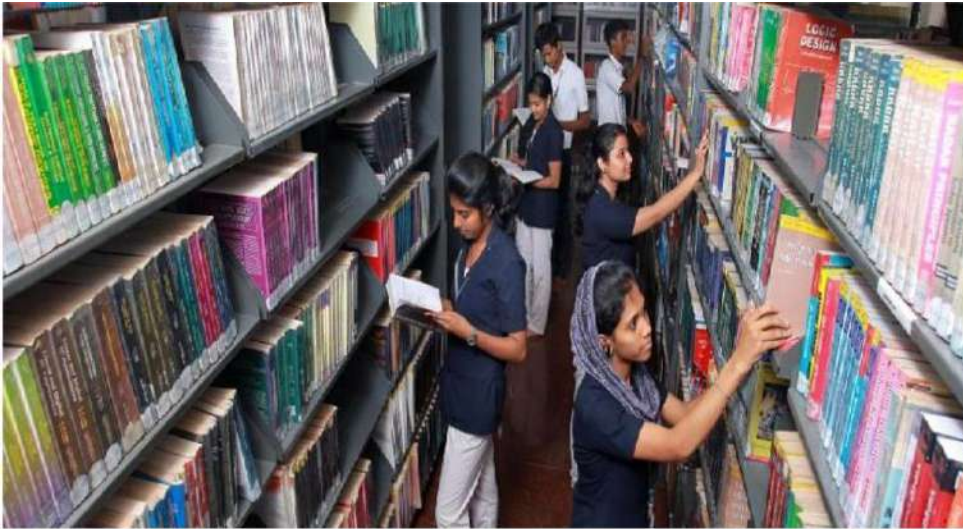
The College is governed by a Governing Board consisting of 12 members and has an academic advisory board consisting of 13 members. His Grace Mar Joseph Perumthottam, the Archbishop of Changanacherry is the Patron and Spiritual Guide and Mar Thomas Tharayil, is the President.

14. FACILITIES & AMENITIES

14.1 Central Library & Information Centre

All the members of staff and students of the College are entitled to use the Library. Three E-Journal Packages available are

- a. J-Gate
- b. DELNET
- c. NDL



14.2 IIT Bombay Remote Centre

The College is a remote centre for providing QIP training to faculty members of engineering colleges through video conferencing. Faculty members from technical institutions in the vicinity of the college are provided with the facility to attend STTP's and workshops conducted by IIT Bombay. Our college is 5 Star rated remote centre of IIT Bombay.

14.3 Language Laboratory

The College has set up a language laboratory to assist the students to develop their communication skills. The laboratory has both audio and video facilities to learn any language. Presently English is being taught here. The students are also being given an opportunity to develop their personality by attending the Personality Development Course.

14.4 Career Guidance and Placement Unit (CGPU)

The Placement and Training Cell of the College is working under the leadership of Faculty members and students from various departments. The cell is managed by the dynamic and committed members of the faculty. The Cell conducts industry interaction and reputed talks of experts like NASSCOM Director, Finishing Schools, etc. The Cell arranges and facilitates hands-on training in emerging trends, and invited talks of eminent personalities and industrial experts and arranges various placement drives for the students of our college.

14.5 Research, Consultancy and Extension Activities

The Research & Development activities at Lourdes Martha College of Science and Technology(LMCST) are guided by the Research Advisory Council and the R & D activities, innovative projects by students and sponsored research projects by the faculty members are being coordinated by the research division setup in the college as Lourdes Innovation Facility for Excellence(LIFE). The mission of LIFE@LMCST is to innovate excellence in academic, technology development and R&D activities. This is achieved by providing technical support for innovate ideas of faculty members and students, by integrating the academic projects with the research interests and by sharing research and development experiences in advanced topics among the students and faculty members through workshops, conferences and seminars. LIFE@LMCST also aims at developing and encouraging entrepreneurship skills among the students.

14.6 Industry–Institute–Interaction Cell

An Industry-Institute Interaction facilitates greater collaboration and cooperation of the institution of the college with the neighboring as well as global Industries. The various interactive initiatives are

- Advanced Partnership with Infosys through Campus Connect
- Partnership with UST Global
- MOUs were signed with 15 industries and academic institutions for collaboration of various activities

14.7 Technical Associations

Each department of study has a Student's Technical Association which organizes

- Periodic Seminars in emerging areas
- Technical Tours and Visits.
- Programmes for personal and professional development and networking with Technical Experts.

Institutional Membership

LMCST is an Institutional member of the following:

Institution of Engineers	-Life Membership Number	:IM-139
ISTE	-Life Membership Number	:IM-1139
CSI	-Life Membership Number	:10144
IEEE	-Life Membership Number	:STB64301

Student Chapter

- **IEEE Student Chapter:** Institute of Electrical & Electronics Engineers, Inc., a non-profit organization, is the world's leading professional association for the advancement of technology. The student Branch gives students the opportunity to meet and learn from fellow students, as well as faculty members and professionals in the emerging fields of technology.
- **CSI Student Chapter:** Computer Society of India is a Professional Body with 72 Chapters and over 511 Students branches in Engineering Colleges throughout India. It has association with similar societies of other countries .ACSI student's branch with a membership of over hundred students has been functional since October 2005. Faculties and students of Computer Science & IT Departments enthusiastically participate in the activities of CSI.
- **ISTE Student Chapter:** The major objective of the Indian Society for Technical Education is to assist and contribute in the production and development of top quality professional engineers and technicians needed by the industries and other organizations.

14.8 Alumni Association

The Lourdes Matha Alumni Association (LOMAA) has been registered and the office bearers of the association for 2023-2024 are the following:

- President: Dr. Beshiba Wilson
- Vice President : Mr.Monish M S
- Secretary: Prof. Renetha J B (Asso. Prof. Dept of CS)
- Joint Secretary: Mr.Jachend C S
- Treasurer: Prof. Ninu John. (Asst. Prof. Dept. of MBA)
- Executive Members:
 - Mr. Jibu Mohan Nair
 - Mr. Syamkumar P J
 - Mr. Prethush P J
 - Ms Neeraja Radhakrishnan
 - Mr. Sandeep K R
 - Mr. Gokul V R
 - Mr. Arun Kishore A R
 - Ms. Abhirami B
- Honorary members
 - Ms. Sreekaladevi K
 - Ms. Sherin Joseph

14.9 College Hostel

Hostel is second home to mould the students as excellent professionals with good discipline and right attitude. The College has excellent residential facilities for the students admitted to the various courses. There are two hostels in the campus. St. Thomas Hostel for Boys and Assisi Hostel for Girls. Hostels have a common room with LED television &c able connection for recreation facilities. The hostels have separate well equipped Mess, Kitchen and Dining Hall, Local/national newspapers area, subscribed with a view to enhance communication skills and personality of the boarders in to play. There is a strict set of hostel rules regarding general discipline, study time, mess time etc .and all are expected to follow the rules. Ragging in any form in strictly prohibited by law (Kerala prohibition of Ragging Act1998 section 3 which makes ragging Punishable)

Assisi Ladies Hostel



Assisi Hostel is run by Franciscan Clarist Sisters. This Hostel can accommodate about 75 girls. The Management evinces keen interest in ensuring that the living of the boarders on the campus should be secure, safe and academic oriented. A chapel is provided, so that catholic students can attend daily Holy Mass, and prayer meetings. Hostel, with its beautifully landscaped and carefully tended gardens, provides an ideal environment for a congenial learning experience.

Contact Number and details

Hostel warden : Ms. Jessy Joseph
Contact numbers : 04722853922, 9539870223
Accommodation Capacity: 75nos.

St.Thomas Boys Hostel

St. Thomas Hostel can accommodate 250 inmates. Hostel administration is managed by a Priest, who is the Chief Warden and a team of Wardens drawn from the faculty. Hostel Executive Committee takes decisions on routine matters. The hostel is set-up in a three storeyed building. Biometric system has been introduced to monitor the attendance and presence of students in the hostel. Hostel has full-fledged supporting staff, security staff and other workers. A chapel is provided, so that catholic students can attend the daily Holy Mass, and prayer meetings. During

study time hostel inmates are expected to observe absolute silence. The Contact Number and Details student has the freedom to study in his own room or to get involved in group study in the study hall.

Contact Number and details

Hostel Warden : Rev. FR. Rijo Edamuriyil

Contact numbers: 04722851331, 9497801968

Accommodation Capacity: 250 Nos.

14.10 Transportation

College Buses are available for staff and students. They will be plying from various points in Attingal, Venjaramoodu, Trivandrum, Balaramapuram, Neyyattinkara, Parassala, Poovar and Nedumangad to College Campus and back on all working days.



14.11 Canteen & Cafeteria

The college has a modern canteen. More than 200 students and faculty members can be served simultaneously. It houses an elegantly designed kitchen which exemplifies cleanliness. College also have cafeteria facilities well distributed in the campus to take care to the need of all during coffee break time.

14.12 Book Stall

A good collection of Technical Books is available in the Book stall. Stationery items are also available in the shop. All technical books in accordance with prescribed university syllabus is available at the stall. Students can buy them at discounted rate.

14.13 IEDC

With the aim of promoting Innovation and Entrepreneurship activities among the students of LMCST, an Innovation Entrepreneurship and Development Cell (IEDC) was inaugurated with the support of Kerala Start-up Mission (KSUM). IEDC provides the students of Lourdes Martha College of Science & Technology an opportunity to join the dynamic young entrepreneurs' population and aims to boost the student entrepreneurship activities by conducting workshops, seminars and leadership camps. The Innovation Entrepreneurship and Development Centre (IEDC) and 'startup boot camp' of LMCST was inaugurated on 14th Monday September 2015 by

Sri.PH Kurian, I.A.S, the then, Principal Secretary of Industries & IT and a young entrepreneur

Mr. Ayappan Asokan, an alumnus of LMCST, shared his experience and ideas for becoming a successful entrepreneur.

14.14 Robotics Club

Robotics club is the result of an inter-departmental initiative to nurture the best minds in the fast growing field of robotics. Inter-departmental and inter-collegiate competitions are held in collaboration with reputed institutes like IIT Bombay, IIT Roorkee etc.

14.15 Photographic Club

Faculty and students who have great interest and passion for photography are welcome to be a part of this club. Competitions and photo exhibitions are conducted periodically.

14.16 NSS Unit

The National Service Scheme unit No. 525 and 529 works on the motto 'Not Me But You', reflects the essence of democratic living and upholds the need for self-less service. NSS in the last one year conducted various social service activities such as awareness programmes among rural people of Digital India, blood donation camp & in-house organic vegetable farming.

14.17.NCC Unit

Unit Name : 3(K) BN NCC ARMY WING

The NCC is a responsive, learning and continuously evolving organization. Its activity is guided by certain Core Values that we endeavour to instill among all ranks of the NCC. Our college is allotted with NCC Army Wing of cadet strength 160, under 3(k) BN NCC, Poojapura.

14.18 Staff Club

It's the forum where both teaching as well as non-teaching staff get together to celebrate festival events like Onam and Christmas. It also supports their members and relatives, students in their exigency. The club meets monthly to inter act with each other so as to develop a very healthy and strong bond of friendship.

14.19 Sukrutha

Sukrutha is a non-profitable charity and social service club formed by the final year students of LMCST whose mission is to assist the poor and needy in and around the college to the best possible manner. Sukrutha provides an excellent platform for the students to do their part to build a better society. Sukrutha has organized a blood donation camp in association with the NSS Lmcst unit inside the campus. They also organised a free eye checkup camp, for both students and for the public, inside the campus. By organizing all these events sukrutha intends to achieve its vision to create a better society.

14.20 Vivarthana

Vivarthana—"Changing The Culture of Innovation", aims at improving soft skills as well as other hard skills needed for students to understand the marvel of engineering. The club is an organization by the students of ECE, with a mission to make learning an experience you can live with rather than just gathering some information. Vivarthana plans to conduct tech talks, seminars, workshops, industrial visits, product design, ideation workshops, incubation for

innovative products, debates, quizzes, social face and more.

15 SCHOLARSHIPS & FEE WAIVERS OFFERED:

- Tuition Fee Waiver

Tuition fee waiver scholarship of All India Council for Technical Education(AICTE) will be made mandatory in all the technical institutions. The scheme is for economically backward students including women students are eligible under the scheme. 5% of sanctioned intake per course shall be available for these admissions.

- Scholarship

SC/ST /OBC(H), OEC Scholarship

Minority Scholarship

Fisherman Scholarship

16. COURSES OFFERED

Under Graduate Courses

Sl. No.	Name of the Programme	No: of seats	Duration
1	Civil Engineering	60	8Semesters
2	Computer Science and Engineering	120	8Semesters
3	Electronics & Communication Engineering	60	8Semesters
4	Electrical & Electronics Engineering	30	8Semesters
6	Mechanical Engineering	90	8Semesters

Post Graduate Courses

Sl. No.	Department	Stream	No:of seats	Duration
1	Electronics & Communication	Applied Electronics & Instrumentation	9	4Semesters
2	Computer Science & Engineering	Computer Science & Engineering	18	4Semesters
3	Electrical and Electronics Engineering	Control Systems	9	4Semesters
4	Computer Applications	Master of Computer Application	60	4Semesters
5	Management Studies	Specialisations- Finance, HR, Marketing, Operations	60	4 semesters

17. ADMISSION PROCEDURE & REQUIREMENTS

Entrance Test

B.Tech.	
Government Quota	50% of seats filled through the Centralized Allotment Process(CAP) for admission to Professional Degree Courses in Kerala based on the Common Entrance Examination conducted by Government of Kerala.
<i>Lourdes Matha College of Science and Technology</i>	<i>Mandatory Disclosure 2023-2024</i>
	Candidate who have passed HSE/Equivalent with 45% marks in Mathematics, Physics and Chemistry put together are eligible for Govt Quota

	50% weightage for marks in Maths, Physics and Chemistry in the qualifying (+2) examination and 50% weightage for the marks in the Common Entrance Examination conducted by CEE, Government of Kerala.
Name and Address of the Test Agency	Commissioner for Entrance Examination, Government of Kerala, Fifth Floor, Housing Board Buildings, Santhi Nagar, Thiruvananthapuram – 695001, Ph.No:04712332120 /2338487 Website: www.cee-kerala.org
M.Tech	
	<p>➤ Preparation of Merit list and Allotment of Seats:</p> <p>50 % of seats will be filled by the College according to the rank order from the rank list published by DTE. Under this, seats are reserved for Open Merit, SC/ST and sponsored category candidates. The remaining 50% seats will be filled by the College on the basis of merit. Seats are reserved for Open merit, Christian community.</p> <p>➤ Percentage of seats reserved under various heads: Details of reservation and seat allocation under various categories are mentioned in the last page. Candidates belonging to all denominations in Christian community are eligible to be considered in the Christian community quota seats.</p> <p>➤ Furnishing of false information /particulars would result in the forfeiture of candidature as well as cancellation of admission to the course if admitted and will attract the relevant provisions of criminal laws of the land.</p> <p>Merit list for the different categories will be published in the College website/ College notice board. Selection will be strictly based on the order of merit. Selected candidates will not be intimated by post and they are advised to refer to the College website or notice board and appear for the interview for final selection without fail.</p>
MCA	
Government Quota	50% allotted by the Directorate of Technical Education, Govt. of Kerala
Management Quota	50%- admitted on the basis of the rank in the Entrance examination.
Name and Address of the Test Agency	LBS Center for Science & Technology, Nandavanam, Palayam, Thiruvananthapuram, Kerala 695001 http://www.lbscentre.in Phone:0471-2324396, 2324148

Eligibility Criteria

B.Tech.	50% weightage for total marks in Mathematics, Physics and Chemistry in the State Board/ CBSE/ISC or other equivalent qualifying (+2) examination and 50% weightage for marks in the Common Entrance Examination conducted by CEE, Government of Kerala. (Subject to the usual concession allowed for backward and other communities from time to time). SC/ ST students need to get only a pass mark in the qualifying examination
Minimum Level of Acceptance	Candidates who have passed HSE/Equivalent with 45% marks in Mathematics, Physics and Chemistry put together are eligible for admission under Government & Management Quota
M.Tech.	<ul style="list-style-type: none">➤ Candidates should have undergone the B.Tech /B.E course in an Institution approved by AICTE and recognized by Kerala University.➤ Candidates should have a minimum of 60% aggregate marks in the Engineering degree examination in the relevant subject. For SC/ST candidates a pass in the Engineering degree course is sufficient. For SEBC students, a minimum of 54% aggregate marks in the Engineering degree examination is mandatory.➤ Rounding off the percentage of marks to the nearest whole number is not permitted.➤ Candidates, who have passed AMIE/AMIETE Examinations and satisfying the following conditions, are eligible for admission.<ol style="list-style-type: none">1) They must have valid GATE score.2) A minimum of 55% marks for section B in AMIE/AMIETE examination.
MCA	Candidates should have passed in any recognized Bachelor's Degree of minimum 3 years duration in any discipline with Mathematics at 10 + 2 level OR Should have passed in any recognized Bachelor's Degree of minimum 3 years' duration in any discipline with Mathematics/Statistics as one of the subjects OR Should have passed in BCA Degree of minimum three years duration from a recognized University. The candidate should have secured a minimum aggregate of 50% marks in their Degree examination. For SEBC and physically handicapped candidates, the aggregate mark required is 45%. For SC and ST candidates, a minimum pass in the degree examination is sufficient. No rounding off of percentage of marks to the nearest higher integer is permitted Note:

	<p>1.Candidate seeking admission to the course should be qualified from any University in Kerala or any other Universities, recognized by any of the Universities in Kerala.</p> <p>2.Final Year regular Bachelor’s Degree students are also permitted to appear for the Entrance Examination subject to the condition that the original degree certificate and mark lists of all parts of the qualifying examination shall be Produced by the candidate at the time of admission</p>
MBA	A Minimum of 50% marks in aggregate or 5.00 CGPA on a 10 point scale or equivalent in the qualifying degree. A relaxation of 5% in marks or equivalent CGPA for SEBC candidates. For SC/ST students a pass in the qualifying exam is sufficient. Relaxation for PWD candidates is as per the Government rules. Sponsored candidates from Industries, R&D organizations, National Laboratories as well as educational institutions with a bachelor’s degree are eligible for admission.
Selection Procedure	<p>Good score in any Management Aptitude Test- C-MAT /CAT/KMAT (The minimum qualifying cut off marks of KMAT Kerala Entrance Examination shall be 15% (72/720) for General Category from the academic year 2019. The minimum cut off for SEBC will be 10% (72/720) and 7.5%(54/720) for SC/ST.</p> <p>Admission to the MBA Programme is based on the scores Obtained by the candidate in the group discussion, personal interview and academic record.</p> <p>15% of seats comes under NRI Quota</p>

Fee Structure

B.Tech.	<p>Admission Fee :Rs. 500/-</p> <p>Tuition Fee(per semester) :Rs. 37,500/-</p> <p>Caution Deposit (Refund) :Rs. 10,000/-</p> <p>KTU Exam Fee (per semester) :Rs.1,700/-</p> <p>Refundable Interest Free Deposit :NIL</p> <p>Student Administration Fee (KTU) :Rs. 1,050/-</p> <p>Sports Fee (KTU) :Rs. 500/-</p> <p>Afiliation Fee (KTU) : Rs 750/-</p> <p>Value added courses and special facilities(per annum):Rs.10,000/-</p>
M.Tech.	<p>Admission Fee :Rs. 500/-</p> <p>Tuition Fee (per semester) :Rs.12,000/-</p> <p>CautionDeposit: Rs.5,000/-</p> <p>KTU Exam Fee (per semester) :Rs. 1,500/-</p> <p>KTU Administration Fee :Rs. 1,000/-</p> <p>Sports Fee(KTU) :Rs. 500/-</p> <p>Afiliation fee (KTU) : Rs 1000/-</p> <p>Special Facilities (per sem.):Rs. 5000/-</p>

MCA	Admission Fee: Rs . 500/- Tuition Fee (per semester) :Rs.25,000/- Caution Deposit (Refundable) :Rs.10,000/- KTU Exam Fee (per semester) :Rs.1,500/- KTU Administration Fee :Rs.1,050/- Sports Fee (KTU) :Rs. 530/- Affiliation Fee (KTU) : Rs 1000/- Special Facilities (per annum): Rs.3,300/-
MBA	Admission Fee :Rs. 500/- Tuition Fee (per semester) :Rs.60,000/- Caution Deposit: Rs.10,000/- KTU Administration Fee :Rs. 1,050/- Sports fee <u>Rs. 530/-</u> Affiliation fee (KTU) : Rs 1000/-
Boarding and Lodging in Hostels	Admission Fee :Rs. 250/- Mess (per month)Advance :Rs. 3,000/- Rent (per Year) :Rs.24000/- (2000/- per month) Caution Deposit (Refundable):Rs.5,000/-
Time Schedule for payment of fee for the entire programme	Semester Fees–June/July and January/February of every year
Number of Fee Waivers offered for the current academic year under different schemes	1.Total Fee Waiver (under AICTE) 2.LMCST Scholarship

Admissions

1. Under Graduate Courses

MANAGEMENT QUOTA	2023-24	2022-23	2021-22	2020-21
Total No: of applications Received	75	96	85	106
No:of applications accepted	52	66	82	102
No:of applications Rejected	23	30	3	4
Admissions under NRI Quota	2023-24	2022-23	2021-22	2020-21
	53	86	88	104

2. M.Tech

MANAGEMENT QUOTA	2023-24	2022-23	2021-22	2020-21
Total No: of applications Received	NIL	NIL	4	10
No: of applications accepted	NIL	NIL	4	9
No: of applications Rejected	NIL	NIL	NIL	1

3. MCA MANAGEMENT

QUOTA	2023-24	2022-23	2021-22	2020-21
Total No: of applications Received	45	41	33	30
No: of applications accepted	45	41	33	30

No: of applications Rejected	NIL	NIL	NIL	NIL
------------------------------	-----	-----	-----	-----

4. MBA

MANAGEMENT QUOTA	2022-23	2021-22	2020-21	2019-2020
Total No: of applications Received	86	76	141	50
No: of applications accepted	77	41	102	22
No: of applications Rejected	9	35	39	28

PLACEMENT DETAILS:

B.Tech

Branch	Number of (passout) students Placed through placement Cell		
	2021	2022	2023
Civil Engineering	1	3	15
Computer Science and Engineering	14	16	31
Electronics & Communication Engineering	5	0	9
Electrical & Electronics Engineering	2	0	3
Mechanical Engineering	3	3	24

18. LABORATORYDETAILS

CIVILENGINEERINGDEPARTMENT

Sl. No.	Lab	Facilities Available
1	SURVEYLAB	1. CHAIN -5No. 2. FIBERGLASSTAPE -4No. 3. PRISMATICCOMPASS -2No. 4. SURVEYOR'SCOMPASS -1No. 5. PLANIMETER -1No. 6. DUMPYLEVELWITHLEVELINGSTAFF4M -7No. 7. TILTINGLEVELWITHALUMINIUMSTAND -1No. 8. PLANETABLE -7No. 9. THEODOLITE -7No. 10. PENTAXAUTOBAR -1No. 11. SUBSTANCEBAR -1No. 12. TOTALSTATION -2No.
2	MATERIAL TESTING LAB I	1. UNIVERSALTESTINGMACHINE400KN -1No. 2. UNIVERSALTESTINGMACHINE100KN -1No. 3. BRINELLHARDNESSTESTINGMACHINE -1No. 4. ROCKWELLHARDNESSTESTINGMACHINE -1No. 5. IMPACTTESTINGMACHINE -1No. 6. SPRINGTESTINGMACHINE - 2No.(1Manuallyoperated, 1 Digital) 7. TORSIONTESTINGMACHINE -1No. 8. TORSIONPENDULUM -1No.

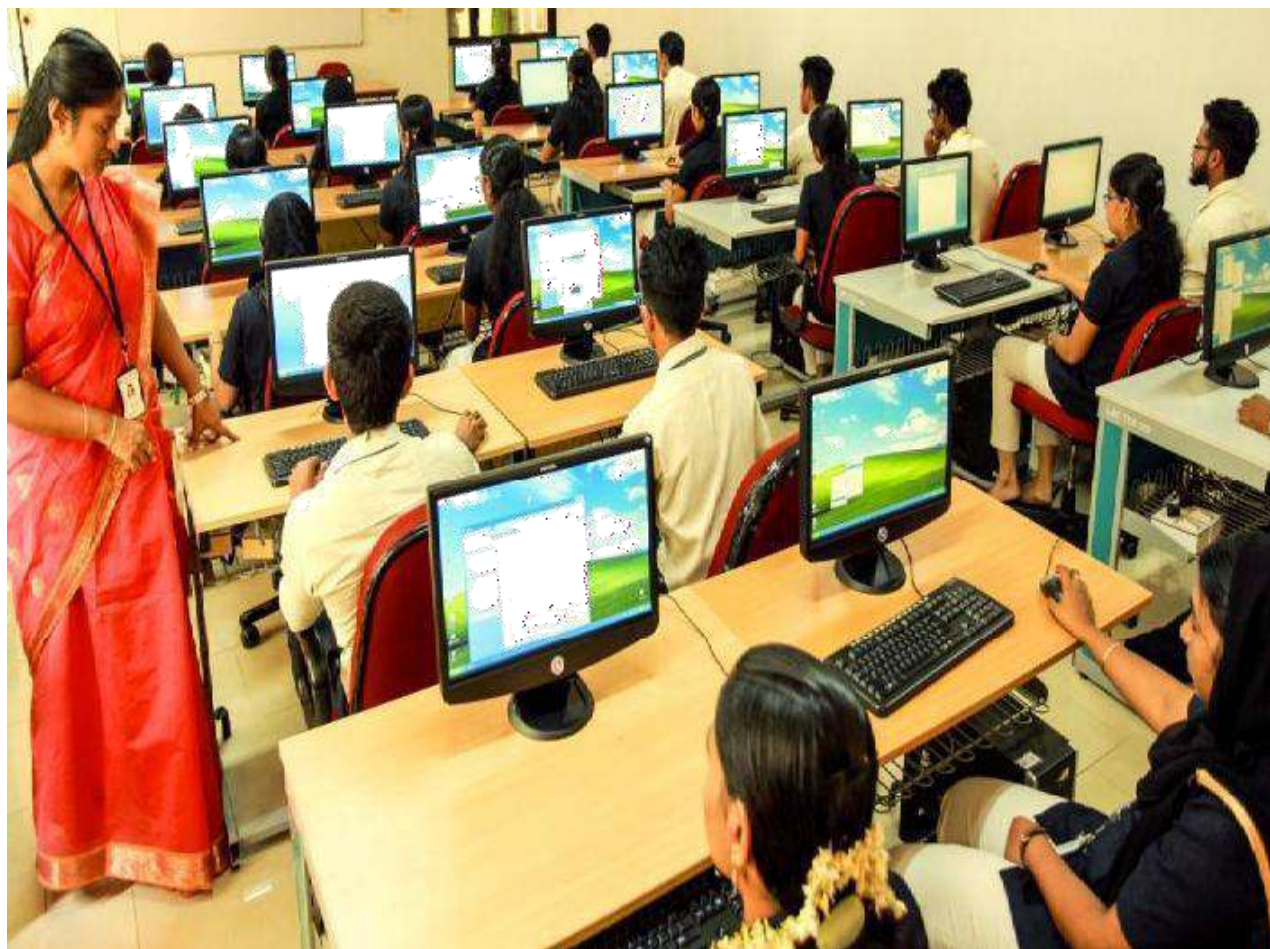
3	CONCRETE TESTING LAB	<ol style="list-style-type: none"> 1. HYDRAULICCTM2000KNWITH3 LOADGAUGES -1No 2. LYNXVICATNEEDLE APPARATUS -1No 3. COMPACTINGFACTORAPPARATUS -1No 4. SLUMPTTEST APPARATUS -1No 5. FLOWTABLEFORCONCRETEHANDOPERATION -1No 6. VEEBEECONSISTOMETER -1No 7. REBOUNDHAMMERMODELW-M-250 -1No 8. FLEXURETESTING MACHINE -1No 9. LONGITUDINALCOMPROMETERWITHDIALGAUGE -1No 10. DENSITYBASKET -1No 11. SIEVESHAKES(MOTORIZED)FOR20cm -1No
4	TRANSPORTATION ENGINEERING LAB	<ol style="list-style-type: none"> 1. CRUSHINGMOULD -1No. 2. WEIGHINGBALANCE -1No. 3. IMPACTTESTINGAPPARATUS -1No. 4. LOSANGELESABRASIONAPPARATUS -1No. 5. LENGTHGAUGE&THICKNESSGAUGE -1No. 6. SPECIFICGRAVITYAPPARATUS -1No. 7. ANGULARITYMOULD&TAMPINGROD -1No. 8. CBRTESTINGAPPARATUS -1No.
		<ol style="list-style-type: none"> 9. COMPACTION -1No. 10. A)MOULD -1No. 11. B) RAMMER -2No. 12. RINGANDBALLAPPARATUS -1No. 13. DUCTILITYAPPARATUS -1No. 14. VISCOMETER -1No. 15. PENSKYAPPARATUS -1No. 16. DENSITYBOTTLE -1No.
5	GEO TECHNICAL ENGINEERING LAB	<ol style="list-style-type: none"> 1. PYCNOMETER -2No. 2. WEIGHINGBALANCE -1No. 3. HYDROMETER -1No. 4. CASAGRANDELIQUIDLIMITAPPARATUS -1No. 5. CONSTANTHEADPERMEAMETER -1No. 6. VARIABLEHEADPERMEAMETER -1No. 7. UCCTESTINGMACHINE -1No. 8. DIRECTSHEARTESTMACHINE -1No. 9. CONSOLIDATIONTESTAPPARATUS -1No. 10. COMPACTION <ol style="list-style-type: none"> a. MOULD -1No. b. RAMMER -2No.
6	ENVIRONMENTAL ENGINEERING LAB	<ol style="list-style-type: none"> 1. HOTAIROVEN -1No. 2. MUFFLEFURNACE -1No. 3. BODINCUBATOR -1No. 4. FLOCCULATORFORJARTEST -1No.





COMPUTER SCIENCE DEPARTMENT

Sl. No.	LAB	No. of computers	Operating system	Software's available
1	Programming Lab(A)	35	Ubuntu14.4, Windows 10, Debian	Turbo C, Python, Virtual Box
2	Database Lab(B)	36	Ubuntu18.4, Windows 10, Debian	GLUT(Graphics programming), G++(C++programming),Turbo C, Python, Virtual Box
3	Computing Lab (D)	60	Ubuntu14.4, Windows 10	Turbo C, Language Lab and Spoken tutorial Soft wares.
4	Microprocessor Lab	10	Windows XP	MASMsoftware,8086Kit,805 1Kit, Interfacing Cards
5	Internet Lab	36	Ubuntu18.4, Windows 10	Turbo C



ELECTRONICS AND COMMUNICATION ENGINEERING
PROGRAMMING & SIMULATION LAB



Objective:

- To study the basics of signal processing techniques and filter design using DSP
- To study the basics of MATLAB and design circuits

Facilities Available:

SL	Name of item available	Quantity
1	PC HCL wide LCDw/spkr BLKTCO, desktop computers	25
2	PrinterEPSONLX300+II	1
3	ASUS0x1DVD Writer	1
4	Mouse HCL	22
5	DSP Kit(VSK6713)	10

6	MIC	9
7	Speaker400W	10
8	ASSM9 to9 Cables	10
9	PC(Power Chord)	10
10	ASSMSP7 Patch chord	40
11	CDTMS320DSPfamily Code Composer Studio	1
12	CD-R	7
13	TMS320C 6748 DSP KIT with Code Composer Studio	5
14	FPGA KIT	3
15	Bluetooth receiver	1
16	GSM Magnetic Antenna	2
17	Dougle	1
18	Arduino UNO R3	1

SOFTWARE LAB

SL NO	Name of Item	Quantity
1	MATLAB	35Users
2	NILABVIEW	50Users
3.	Signal Processing Toolbox	30Users
4	DSP System Tool box	5users
5	Arduino Project Kit	9Users
6	779026-01NIDARUSB6009	5Users
7	SIMULINK	30 users
8	Communication Tool Box	5 Users
9	Control tool box	5 Users

MICRO CONTROLLER LAB

Objective:

- Practice Assembly Language Programs to perform simple mathematical and logical operations Understand interface experiments

SLNO	Name of Item available	Quantity
1	8051 Trainer Kit	15
2	Interfacing Cards	24
3	Stepper Motor	2

DIGITAL ELECTRONICS LAB

Objective:

- Acquire Basic knowledge of digital logic levels.
- Prepare students to do analysis.
- Develop the skills and confidence to conceive and implement a complex digital system.

Facilities Available:

SLNO	Name of Item available	Quantity
1	Trainer Kit	25
2	8086 μ p	17
3	CRO	4
4	Function Generator	2
5	IC Tester	2
6	Power supply	4



Objective:

To Train students in both analog and digital transmission/ reception of signal by constructing the circuits of amplitude modulation, frequency modulation and phase modulation

Facilities Available:

SLNO	Name of Item available	Quantity
1	CRO	13
2	DSO	2
3	FUNCTION GENERATOR	31
4	POWER SUPPLY	26
5	MULTI METER	15
6	ICTESTERDIG/ANALOG	2

ELECTRONIC PRODUCT DESIGN LAB**Objective:**

- EPD lab is aimed for the design of Electronic Products [PCB Lay out and Designing].
- Design PCB layout, soldering, packaging and testing of Electronic Products are carried out in this lab.

Facilities Available:

- Soldering stations
- PCB layout and designs of tware's like NI, Multism, Ultiboard (10Users)

MICROWAVE & OPTICAL COMMUNICATION LAB



Objective:

Equipped with instruments required to give hands on training in:

- Microwave Communication,
- Optical Communication
- Antenna Wave Theory

SL.No:	Equipments	Quantity
1	Klystron Benches	4
2	Gunn Bench	1
3	Antenna Setup	1
4	Fiber Optic Kits	4

INSTRUMENTATION AND CONTROL LAB



Objective:

- Familiarising Various PLC software and Ladder Logic
- Familiarising GUI (Graphical user interface) software like Lab VIEW

ELECTRONIC DEVICES LAB



Objective:

SLNO	Name of Item available	Quantity
1	FLOW PROCESS STATION	1
2	LEVEL PROCESS STATION	1
3	PLC	1
4	ROBOTICARM	1
5	BOTTLE FILLING TRAINER	1
6	ICTESTERDIG/ANALOG	1

- To study working of electronic circuits
- To design the circuits as per the specifications

SL.NO	EQUIPMENTS	QUANTITY
1	Audio Power Meter	1
2	CRO	22
3	Frequency Counter	2
4	Function Generator	20

5	LCRQ Meter	1
6	Multimeter	51
7	Power Supply	28
8	Pulse Generator	1
9	HondaSiel Generator	1
10	Servo Stabilizer	1
11	Micro Ammeters	6
12	Milli Ammeters	4
13	Panel Meters	32
14	Analog IC Tester	1
15	DSO	3

2

Spares

- DSO 2
- CRO 2
- Powersup
plies 5
- Function
generator
2

ELECTRICAL&ELCTRONICS DEPARTMENT

ELECTRICAL MACHINES LAB



Sl.No.	List of Equipments	Type	Quantity
1.	Alternators	Salient Pole(5kVA,1500rpm,415V)	1
		Non Salient Pole((5kVA,1500rpm,415V)	1
		Slipring Induction Motor(3kW,965 rpm,415V)	2

2.	Three Phase Induction Motors	Squirrel Cage Induction Motor(3.7 kW,1430rpm,415V)	3
3.	Single Phase Capacitor Start Induction Motor	(1.1kW,1440rpm,240V)	1
4.	Synchronous Motor	(5kVA,1500rpm,415V)	1
5.	DCShunt Motor	(3.7kW,1500rpm,220V)	2
6.	DCSeries Motor	(3.5kW,1500rpm,220V)	1
7.	Transformers	Single Phase Transformers(3KVA,230/120V)	4
		Three Phase Transformers(5KVA,415/120V)	1

CIRRCUITS AND ME ASUREMENTS LAB



Sl.No	List of Equipments	Quantity
1.	Power Supply	13
2.	Function Generator	8
3.	CRO	8
4.	Analog Single phase Energy meter	3
5.	Analog Single phase Energy meter	2
6.	Digital top watch	2
7.	Galvanometer	12
8.	Slide wire Potentio meter	2

9.	Voltratiobox	4
10.	Standard cell	3
11.	Constant voltage source	3
12.	Three phase energy meter	2
13.	Water load single phase	1

POWER SYSTEM LAB



Sl no	Equipments	Specification	Quantity
1	Testsetfortestinginsulationwithcontrolpanelandcurrentlimitingaccessories	100kVAC/DC	1
2	Oil Test Kit	0-60kV	1
3	Resistance Divider	100kV	1
4	Relay Test Bench to various Relays		
5	Over current Relay		1
6	Under voltage Electro mechanical relay		1
7	Microprocessor Controlled Overcurrent Relay		1
8	Microprocessor Controlled under voltage & Over voltage Relay		1
9	Universal Relay Test Circuit		1
10	Current Transformer	50/5A	1
11	Potential Transformer	440/110V	1
12	Insulation Test Kit	30kV	1
13	Computers	10	1
14	Earth Resistance Tester withkit		1
15	Insulation Tester:Megger	500	1
16	Desktop PC's		5



SI No.	Equipments	Specification	Quantity
1	Digital Trainer Kit		10
2	8085microprocessor	Micro 85LC	8
3	8086microprocessor	Micro86-88 LCD	2
4	Keyboard		4
5	CRO		3
6	ADC -0809	16Channel,8 bit, Model No: VBMB 003	2
7	DAC-0800	8Bit-VBMB002	2
8	8255		2
9	Steppermotor	2kg,12V-DC	2
10	Steppermotor controller	Model NO:VBMB 13A	2



Sl no	Equipments	Details	Quantity
1.	Signal generator	2mhzmodel:caddo4061	5
2.	Digital multi meter	Kusam-me10	8
3.	Cathode ray oscilloscope	20mhzmodel cado801	3
4.	Power supply output	Aplabregulated bench½ rackadaptable	9

SYSTEMS&CONTROLLAB



Sl no	Equipment	Quantity
1	AC Servomotor	1
2	DC Servomotor	1
3	Temperature Control System	1
4	Synchro	1
5	Process Control Simulator	1
6	Non-linear Relay Control System	1
7	Desktop PC's	10

SOFTWARE LAB



Lab	No. of computers	Operating system	Specification
Programming Lab for second year students.	20	Windows XP,Ubuntu14 .04	Processor &Speed:- Pentium(R)Dual -Core 2.80 Ghz Hard Disk Capacity:- 160 GB GBRAM Capacity:-2 GB
Software Lab for third year students			



MECHANICAL ENGINEERING
FLUID MECHANICS LAB

Sl. No.	Name of Experiment
1	Study of flow measuring equipment's-water meters, venture meter, orifice meter, current meter
2	Study of gauges-pressure gauge, vacuum gauge, manometers
3	Study of valves-stop valve, gate valve and foot valve
4	Study of pumps-Centrifugal, Reciprocating, Rotary, Jet
5	Study of Turbines-Impulse and reaction types
6	Study of Hydraulicram, accumulator
7	Determination of Coefficient of discharge and calibration of Notches, Orificemeter, Nozzle and Venturi meter
8	Determination of Chezy's constant and Darcy's coefficient on pipe friction apparatus
9	Determination of Hydraulic coefficients of orifices
10	Determination of Metacentric Height and Radius of gyration of floating bodies.
11	Performance test on Rotodynamic and Positive displacement pumps
12	Performance test on Impulse and Reaction turbines
13	Speed variation test on Impulse turbine
14	Determination of best guidevane opening for Reaction turbine

I.C.ENGINES LAB



Sl. No.	Name of Experiment
1	Study of Multi cylinder Petrol Engine
2	Study of Single Cylinder Engine–Electrical Loading
3	Study of Single Cylinder Engine–Mechanical Loading
4	Study of Single Cylinder Engine –Hydraulic Loading
5	Performance Test on Slow Speed Diesel Engine
6	Performance Test on Multi-cylinder Petrol Engine
7	Performance Test on Diesel Engine- Electrical Loading
8	Performance Test on Twin Cylinder Diesel Engine
9	Morse Test
10	Retardation Test
11	Flash and Fire Point
12	Determination of Viscosity using Pen sky Martin Apparatus
13	Valve Timing Diagram for a Single Cylinder Diesel Engine
14	Performance Test on Reciprocating Compressor
15	Performance Test on Rotary Compressor
16	Determination of Calorific Value of a fuel using Junker's Gas Calorimeter





Sl. No:	Name of Equipment	Quantity
1	Lathe	19
2	Shaper	6
3	Horizontal milling machine	5
4	Vertical milling machine	1
5	Radial drilling machine	1
6	Slotting machine	2
7	Surface grinding machine	1
8	Cylindrical grinding machine	1
9	CNC lathe	1
10	CNC milling	1



CADLAB

Sl. No.	Equipment/Software	Quantity
1	Desktop PC's	29
2	Softwares: 1. Solid Works -30 License 2. Algor -15 License 3. Cadian Mech -30 License 4. Autocad Mechanical	

THERMAL ENGINEERING LAB



Sl. No.	Name of Equipment	Quantity
1	Emissivity Apparatus	1
2	Lagged Pipe Apparatus	1
3	Thermal Conductivity Apparatus	1
4	Natural Convection Apparatus	1
5	Parallel/Counter Flow Heat Exchanger	1
6	Shell and Tube Heat Exchanger	1
7	Reciprocating Air Compressor	1
8	Rotary Air Compressor	1
9	Refrigeration Tutor	1

List of Equipments

Sl No	Name of Experiment
1	Determination of LMTD and effectiveness of parallel flow Counter flow and cross flow heat exchangers
2	Determination of heat transfer coefficients in forced and free convection
3	Determination of thermal conductivity of solids(composite wall)
4	Determination of emissivity of a specimen
5	Study and performance test on reciprocating compressor
6	Study and performance test on rotary compressor/blower
7	Study and performance test on refrigeration and air conditioning equipment

Experiments

MECHANICAL ENGINEERING LAB

List of Experiments

SI No	Name of Experiment
1	Study of metallurgical microscope and polishing machines
2	Microstructure study of Mild Steel, Cast iron, Aluminum
3	Study and experiment using profile projector
4	Study of various measuring instruments like micrometers and calipers
5	Experiment to test flatness, roundness
6	Measurement of angle using Sine bar
7	Experiment on Toolmakers microscope and Autocollimator
8	Experiment on acceptance sampling
9	Study and testing using tool dynamometer

List of Equipments

Sl. No.	Name of Experiment	Quantity
1	Metallurgical microscope	1
2	Optical profile projector	1
3	Toolmakers microscope	1
4	Autocollimator	1
5	Milling tool dynamometer	1
6	Lathe tool dynamometer	1
7	Drill tool dynamometer	1
8	Double disc polishing machine	1
9	Sine bar	1
10	Strain measurement system	1
11	LVDT	2
12	Combination square	1
13	Verniercalipers	3
14	Micrometer & types	14
15	Dialindicator	3
16	Vernierheightgauge	1
17	Slip Gauge Set	2
18	Hand polishing stand	1

20. DEPARTMENT DETAILS
A. CIVIL ENGINEERING

Name of the Department	CIVIL ENGINEERING		
Course	B.Tech		
Level	Under Graduate		
First Year of Approval by the Council	2013		
Year wise Sanctioned intake in UG	2023	2022	2021
	60	60	60
Year wise Actual admissions in UG	2023	2022	2021
	35	25	36
Cut off marks	As decided by the Commissioner for Entrance Examination, Government of Kerala		
Yearwise Sanctioned intake in PG	NA		
Yearwise Actual admissions in PG	NA		
% students passed with Distinction	Nil		
% students passed with First Class	NIL		
Students Placed	NIL		
Accreditation status of the course	B+		
UG Courses	B.Tech in Civil Engineering		
Doctoral Courses	NIL		

Foreign Collaborations ,if any	NIL
Professional Society Memberships	<ul style="list-style-type: none"> • ISTE Membership For S2Students • MembershipinInstituteofEngineersIndiafor S8 Students
Professional Activities	Seminars, Talks, Idea Presentation, FDPs, Conferences

B. COMPUTER SCIENCE AND ENGINEERING

Name of the Department	COMPUTER SCIENCE AND ENGINEERING		
Course	B.TechM. Tech		
Level	Under Graduate Post Graduate		
First Year of Approval by the Council	2002		
Yearwise Sanctioned intake in UG	2023	2022	2021
	120	90	90
Yearwise Actual admissions in UG	2023	2022	2021
	119	92	68
Cut off marks	As decided by the Commissioner for Entrance Examination, Government of Kerala		
Year wise Sanctioned intake in PG	2023	2022	2021
	18	18	18
Yearwise Actual admissions in PG	2023	2022	2021
	Nil	NIL	2
%students passed with Distinction	2023	2022	2021
	NA	NA	NIL
%students passed with First Class	2023	2022	2021
	NA	NA	2
Students Placed	2023	2022	2021
	NIL	NIL	NIL
Students opted for Higher Studies	2023	2022	2021
	NIL	NIL	NIL
Accreditation status of the course	B+		
UG Courses	B.Tech in Computer Science& Engineering		
Doctoral Courses	NIL		
Foreign Collaborations, if any	NIL		
Professional Society Memberships	Computer Society of India(CSI), IEEE		
Professional Activities	Seminars, Talks, Idea Presentation, FDPs, Conferences		

C. ELECTRONICS AND COMMUNICATION ENGINEERING

Name of the Department	ELECTRONICS AND COMMUNICATION ENGINEERING		
Course	B.Tech M.Tech		
Level	Under Graduate Post Graduate		
First Year of Approval by the Council	2002		
Year wise Sanctioned intake in UG	2023	2022	2021
	60	60	60
Year wise Actual admissions in UG	2023	2022	2021
	35	30	15
Cut off marks	As decided by the Commissioner for Entrance Examination, Government of Kerala		
Year wise Sanctioned intake in PG	2023	2022	2021
	18	18	18
Year wise Actual admissions in PG	2023	2022	2021
	NIL	NIL	1
%students passed with Distinction	2023	2022	2021
	NA	NA	NA
%students passed with First Class	2023	2022	2021
	NA	NA	NA
Students Placed	2023	2022	2021
	NIL	NIL	NIL
Students opted for Higher Studies	2023	2022	2021
	NIL	NIL	NIL
Accreditation status of the course	B+		
UG Courses	B.Tech in Electronics and Communication Engineering		
Doctoral Courses	NIL		
Foreign Collaborations, if any	NIL		
Professional Society Memberships	ISTE		
Professional Activities	Seminars, Talks, Idea Presentation, FDPs, Conferences		

D. ELECTRICAL AND ELECTRONICS ENGINEERING

Name of the Department	ELECTRICAL AND ELECTRONICS ENGINEERING		
Course	B.Tech M.Tech		
Level	Under Graduate Post Graduate		
First Year of Approval by the Council	2004		
Year wise Sanctioned intake in UG	2023	2022	2021
	30	30	30
Year wise Actual admissions in UG	2023	2022	2021
	16	19	17
Cut off marks	As decided by the Commissioner for Entrance Examination, Government of Kerala		
Year wise Sanctioned intake in PG	2022	2021	2020
	18	18	18
Year wise Actual admissions in PG	2023	2022	2021
	NIL	NIL	1
% students passed with Distinction	2023	2022	2021
	NA	NA	NA
% students passed with First Class	2023	2022	2021
	NA	NA	NA
Students Placed	2023	2022	2021
	NIL	NIL	Nil
Students opted for Higher Studies	2023	2022	2021
	NIL	NIL	NIL
Accreditation status of the course	B+		
UG Courses	B.Tech in Electrical and Electronics Engineering		
Doctoral Courses	NIL		
Foreign Collaborations ,if any	NIL		
Professional Society Memberships	ISTE,IEEE		
Professional Activities	Seminars, Talks, Idea Presentation, FDPs, Conferences		

E.ME

Name of the Department	MECHANICAL ENGINEERING		
Course	B.Tech		
Level	Under Graduate		
First Year of Approval by the Council	2005		
Year wise Sanctioned intake in UG	2023	2022	2021
	90	90	90
Year wise Actual admissions in UG	2023	2022	2021
	27	23	20
Cut off marks	As decided by the Commissioner for Entrance Examination, Government of Kerala		
Year wise Sanctioned intake in PG	NA		
Year wise Actual admissions in PG	NA		
Accreditation status of the course	B+		
UG Courses	B.Tech in Mechanical Engineering		
Doctoral Courses	NIL		
Foreign Collaborations, if any	NIL		
Professional Society Memberships	ISTE,IIIE		
Professional Activities	Seminars, Talks, Idea Presentation, FDPs, Conferences		

E.MCA

Name of the Department	MASTER OF COMPUTER APPLICATIONS		
Course	MCA		
Level	Post Graduate		
First Year of Approval by the Council	2005		
Year wise Sanctioned intake in PG	2023	2022	2021
	60	60	60
Year wise Actual admissions in PG	2022	2021	2020
	45	41	31
% students passed with Distinction	2023	2022	2021
		19	15
% students passed with First Class	2023	2022	2021
		5	6
Students Placed	2023	2022	2021
		16	17
Accreditation status of the courses	B+		
Doctoral Courses	NIL		
Foreign Collaborations, if any	NIL		
Professional Society Memberships	ISTE		
Professional Activities	Seminars, Talks, Idea Presentation, FDPs, Conferences		

F.MBA

Name of the Department	DEPARTMENT OF MANAGEMENT STUDIES				
Course	MBA				
Level	Post Graduate				
First Year of Approval by the Council					
Year wise Sanctioned intake in PG	2023	2022	2021	2020	2019
	60	60	60	60	60
Year wise Actual admissions in PG	2023	2022	2021	2020	2019
	55	48	44	56	38
% students passed with Distinction	2023	2022	2021	2020	2019
		3	7	5	7
% students passed with First Class	2023	2022	2021	2020	2019
		17	13	17	27
Students Placed	2023	2022	2021	2020	2019
		31	9	5	8
Accreditation status of the courses	B+				
Doctoral Courses	NIL				
Foreign Collaborations, if any	NIL				
Professional Society Memberships	ISTE				
Professional Activities	Seminars, Talks, Idea Presentation, FDPs, Conferences				

21. **TEACHING FACULTY DETAILS**

A. DEPARTMENT OF CIVIL ENGINEERING

SL No:	NAME	DESIGNATION	Qualification	Remarks
1	Dr. SUNIL J	ASSO. PROFESSOR & HOD	M Tech, PHD	
2	Ms. INDU RAJAN	ASSISTANT PROFESSOR	M.Tech	
3	SHEEBA KUMARI JS	ASSISTANT PROFESSOR	M.Tech	
4	VISHNU P B	ASSISTANT PROFESSOR	M.Tech	
5	KRISHNAPRIYA K G	ASSISTANT PROFESSOR	M.Tech	
6	SREEREMAPRASAD S	ASSISTANT PROFESSOR	M.Tech	
7	MANJUSHA MURALEEDHARAN	ASSISTANT PROFESSOR	M.Tech	
8	PARVATHY V J	ASSISTANT PROFESSOR	M.Tech	
9	MEBIN MATHEW	ASSISTANT PROFESSOR	M.Tech	ON LEAVE
10	Ms. SUMITHARANI P. R.	ASSISTANT PROFESSOR	M.Tech	ON LEAVE
11	ARYA U S	ASSISTANT PROFESSOR	M.Tech	ON LEAVE
12	Ms.ANUPAMA PL	ASSISTANT PROFESSOR	M.Tech	ON LEAVE
13	DEEPTHI J	ASSISTANT PROFESSOR	M.Tech	ON LEAVE
14	AMAL CYRIAC JOSE	ASSISTANT PROFESSOR	MBA, M.Tech	ON LEAVE

B. DEPARTMENT OF COMPUTER SCIENCE AND ENGINEERING

SL No.	NAME	DESIGNATION	Qualification	Remarks
1	Dr..BESHIBA WILSON	PRINCIPAL	M.Tech, Ph.D	
2	Dr. SMITHA J.C	ASSOCIATE PROFESSOR & HOD	M.E, Ph.D	
3	Ms. PRIYA SEKHAR .S.	ASSOCIATE PROFESSOR	M.E.	
4	Ms. RENETHA J.B.	ASSOCIATE PROFESSOR	M.Tech	
5	Ms.ASHA A. S.	ASSOCIATE PROFESSOR	M.E.	
6	Ms.ANJANA THAMPY S.	ASSISTANT PROFESSOR	M.E.	
7	Ms.SHEEJA BEEVI S	ASSISTANT PROFESSOR	M.Tech	
8	Ms. AMBILY JANE	ASSISTANT PROFESSOR	M.E.	
9	Ms .CHRISTY JOJY	ASSISTANT PROFESSOR	M.Tech	
10	Ms. DIVYA CHRISTOPHER	ASSISTANT PROFESSOR	M.Tech	
11	LEKSHMI CHANDRAN	ASSISTANT PROFESSOR	M.Tech	
12	Ms.NISHA O.S.	ASSISTANT PROFESSOR	M.E.	
13	ASHA S	ASSISTANT PROFESSOR	M.Tech	

14	ARCHA A T	ASSISTANT PROFESSOR	M.Tech	
15	BETTY P JUSTIN	ASSISTANT PROFESSOR	ME	
16	ASWATHY A L	ASSISTANT PROFESSOR	ME	
17	Ms. ASHA CHANDRAN	ASSISTANT PROFESSOR	M.Tech	

C. DEPARTMENT OF ELECTRONICS AND COMMUNICATION ENGINEERING

SL No:	NAME	DESIGNATION	Qualification	Remarks
1	DR. REEBA REX S	ASSOCIATE PROFESSOR & HOD	M TECH, Ph.D	
2	Ms.SOORYA S.R.	ASSISTANT PROFESSOR	ME	
3	Ms.BINCY LOUIS	ASSISTANT PROFESSOR	M.E.	
4	Mr. BINU CHACKO	ASSISTANT PROFESSOR	M.E.	
5	Mr.GREEJITH M. G.	ASSISTANT PROFESSOR	M.E.	
6	Ms. SOUMYA V. S.	ASSISTANT PROFESSOR	M.Tech	
7	Dr. JINJU JOY	ASSISTANT PROFESSOR	M.Tech, Ph.D	
8	Ms.DIVYA NATESAN	ASSISTANT PROFESSOR	M TECH	
9	Ms. RESHMA B	ASSISTANT PROFESSOR	M.TECH	ON LEAVE

D. DEPARTMENT OF ELECTRICAL AND ELECTRONICS ENGINEERING

SL NO	NAME	DESIGNATION	Qualification	Remarks
1	Ms. SREEKALADEVI K.	ASSOCIATE PROFESSOR & HOD	M.Tech	
2	Ms. JEAN DICKSON	ASSISTANT PROFESSOR	M.E.	
3	Ms. RENU V.	ASSISTANT PROFESSOR	M.Tech	
4	ASHITHA M	ASSISTANT PROFESSOR	M.Tech	
5	RIKESH P MATHEW	ASSISTANT PROFESSOR	M.E.	
6	MARIA MATHEW	ASSISTANT PROFESSOR	M.Tech	
7	ANUMOL GEORGE	ASSISTANT PROFESSOR	M.Tech	
8	Dr. JOHNSON Y	ASSOCIATE PROFESSOR	M TECH Ph.D	On Leave

9	Ms. AMMU ANNA MATHEW	ASSISTANT PROFESSOR	M.E.	On Leave
10	Ms. CIBUMOL B.BABU	ASSISTANT PROFESSOR	M.Tech	On Leave

E. DEPARTMENT OF MECHANICAL ENGINEERING

Sl No.	NAME	DESIGNATION	Qualification	Remarks
1	Dr. SREEKUMAR V	ASSOCIATE PROFESSOR & HOD	M.Tech, PHD.	
2	Mr.SABARINATH. A.R	ASSOCIATE PROFESSOR	M.E.	
3	Dr. BINDU M. V.	ASSOCIATE PROFESSOR	M.Tech, Ph.D	
4	Ms. DEEJA MILNER L	ASSISTANT PROFESSOR	M.Tech	
5	Mr. SAMMIL S.	ASSISTANT PROFESSOR	M.E.	
6	Mr. DIJIN J S	ASSISTANT PROFESSOR	M.Tech	
7	Mr. AEBYSH ABRAHAM	ASSISTANT PROFESSOR	M.Tech	
8	Mr.ANEESH A M	ASSISTANT PROFESSOR	M.Tech	
9	Mr. SREEJITH S J	ASSISTANT PROFESSOR	M.Tech	
10	Mr. ROHITH S P	ASSISTANT PROFESSOR	M.Tech	
11	Mr. SANDEEP S B	ASSISTANT PROFESSOR	M.Tech	On Leave
12	Mr. JAYARAM V.	ASSISTANT PROFESSOR	M.E.	On Leave

F. DEPARTMENT OF APPLIED SCIENCE AND HUMANITIES

SL NO	NAME	DESIGNATION	Qualification	Remarks
DEPARTMENT OF PHYSICS				
1	DR. JOSE MATHEW	ASSISTANT PROFESSOR	M.Sc, Ph.D	
2	KEERTHANA S	ASSISTANT PROFESSOR	M.Sc	
3	VIJAYALAKSHMI VIJAYAN	ASSISTANT PROFESSOR	M.Sc	
DEPARTMENT OF CHEMISTRY				
1	DR. REMYA R	ASSISTANT PROFESSOR	M.Sc, NET, Ph.D	
2	DR. BISMI S PRAKASH	ASSISTANT PROFESSOR	M Sc, M.Ed, Ph. D	
DEPARTMENT OF MATHS				
1	Mr. CAROLD WILSON LASER J	ASSOCIATE PROFESSOR & HOD	M.Sc,M.Phil	
2	Ms. SUSAN ROSH JOSE	ASSISTANT PROFESSOR	M.Sc,M.Phil,MCA	
3	ABHI ARCHAP	ASSISTANT PROFESSOR	M.Sc	
4	GEETHU JOSE	ASSISTANT PROFESSOR	M.Sc, B.Ed	
DEPARTMENT OF ECONOMICS				
1	JOMOL JOSEPH	ASSISTANT PROFESSOR	MA	
DEPARTMENT OF ENGLISH				
1	DR. ELIZABETH VARGHESE	ASSISTANT PROFESSOR	MA, PHd	
DEPARTMENT OF PHYSICAL EDUCATION				
1	Fr. Ajo Antony	ASSISTANT PROFESSOR		
2	ANU S S	ASSISTANT PROFESSOR	MPEd, M Phil	

G. DEPARTMENT OF COMPUTER APPLICATIONS

SL NO	NAME	DESIGNATION	QUALIFICATION	REMARKS
1	SELMA JOSEPH A	ASSOCIATE PROFESSOR	MCA	On Leave
2	NEETHU MOHAN	ASSOCIATE PROFESSOR	MCA, M.Tech	On Leave
3	ANJANA J	ASSISTANT PROFESSOR	MCA	
4	BISMI K CHARLEYS	ASSISTANT PROFESSOR	MCA	

		&HOD		
5	SHERIN JOSEPH	ASSISTANT PROFESSOR	MCA	

H. DEPARTMENT OF MANAGEMENT STUDIES

SL No:	NAME	DESIGNATION	Qualification	Remarks
1	Dr. SYAM NATH RS	ASSISTANT PROFESSOR & HOD	MBA, LLB, Ph.D	
2	JENY R J	ASSISTANT PROFESSOR	MBA	
3	FR. VARGHESE JOSEPH	ASSISTANT PROFESSOR	MBA	
4	NINU P JOHN	ASSISTANT PROFESSOR	MBA, MCOM	
5	Dr. RANJIT THOMAS	ASSISTANT PROFESSOR	BE, MBA, Ph D	
6	ANAKHA T NAIR	ASSISTANT PROFESSOR	BE, MBA	
7	CINO JOSEPH	ASSISTANT PROFESSOR	B. COM, MBA	
8	ATHIRA RANI A R	ASSISTANT PROFESSOR	B.Sc, MBA	

I. LIBRARY

SL No:	NAME	DESIGNATION	Qualification	Remarks
2	ASWATHY S A	LIBRARIAN	MLISC	

22. RESULT ANALYSIS

RESULT ANALYSIS			
S8 B.TECH 2019- 23 BATCH(KTU)			
LMCST			
Branch	Passed	Total	Percentage
ECE	11	20	55
EEE	5	16	31.25
CSE	29	57	50.88
CE	12	36	33.33
ME	12	43	27.9
Total	69	172	40.12

RESULT ANALYSIS			
S2 B.TECH 2022- 2026			
BATCH(KU)			
LMCST			
Branch	Passed	Total	Percentage
ECE	4	28	14.29
EEE	3	17	17.65
CSE	36	90	40
CE	8	23	34.78
ME	2	22	9.09
Total	53	180	29.44

RESULTANALYSIS			
S4B.TECH 2021 -2025BATCH			
LMCST			
Branch	Passed	Total	Percentage
ECE	7	13	54
EEE	5	15	33
CSE	32	71	45
CE	8	37	22
ME	2	20	10
Total	54	156	34.61

23. COUNSELLING

Counselling/ Monitoring	One Full Time Counselor
Career Counseling	CGPU
Medical Facilities	Doctor appointed on contract basis
Student Insurance	Insurance of the entire of the students has been provided

24. EXTRA CURRICULAR ACTIVITIES Students Activity Board

Cultural Activities

:An Inter Collegiate Technical and Cultural Festis organized under the name EQUINOX each year.

Sports Activities

: Annual Sports Day and Inter Departmental and Inter Collegiate Indoor and Outdoor Games



Literary Activities	:	Literary Competition are conducted during special occasions and College Fest
Magazine/Newsletter	:	College Magazine and Monthly News letter Published by all departments combined
Technical Activities/Tech Fest	:	Conducted by Concerned Department as well as The Entire College
Industrial Visits/Internships/ Study Tours:		Conducted

25. ANTIRAGGING ACT

As per the Honorable Supreme Court order dated 08.05.2009 and in consideration of the Determination of the Central Government and the University Grants Commission, ragging in any kind is prohibited.

Ragging constitutes one or more of any of the following acts:

- a) Any conduct by any student or students whether by words spoken or written or by an act which has the effect of teasing, treating or handling with rudeness a fresher or any other student.
- b) Indulging in rowdy or undisciplined activities by any student or students which causes or is likely to cause annoyance, hardship, physical or psychological harm or to raise fear or apprehension thereof in any fresher or any other student.
- c) Asking any student to do any act which such student will not in the ordinary course do and which has the effect of causing or generating a sense of shame, or torment or embarrassment so as to adversely affect the physique or psyche of such fresher or any other student.
- d) Any act by a senior student that prevents, disrupts or disturbs the regular academic activity of any other student or a fresher.
- e) Exploiting the services of a fresher or any other student for completing the academic tasks assigned to an individual or a group of students.
- f) Any act of financial extortion or forceful expenditure burden put on a fresher or any other student by students
- g) Any act of physical abuse including all variants of it: sexual abuse, homosexual assaults, stripping, forcing obscene and lewd acts, gestures, causing bodily harm or any other danger to health or person;

h) Any act or abuse by spoken words, emails, post, public insults which would also include deriving perverted pleasure, vicarious or sadistic thrill from actively or passively participating in the discomfiture to fresher or any other student.

i) Any act that affects the mental health and self-confidence of a fresher or any other student with or without an intent to derive a sadistic pleasure or showing off power, authority or superiority by a student over any fresher or any other student.

Institutions / Hostels vide the Kerala Prohibition of Ragging Act 1998 Section 3 which makes Ragging punishable as follows:

a) Imprisonment upto a term of 2 years

b) A fine upto Rs10,000/-

c) Dismissal from the institution. The students, so dismissed, shall not be admitted to any other Educational Institution for three years.

An Anti-Ragging Squad is constituted in the college annually. The squad shall make surprise raids in the areas earmarked for them and identify/ check any activities which can develop into a ragging incident. The squad shall in particular keep in view the places where the fresher's and seniors get chance to interact. The squad shall report to the principal, if any preventive actions are to be taken.

Till date, no incidents of ragging have been reported in Lourdes Martha College of Science and Technology due to the strict implementation of discipline inculcated in our college.